



Aetna Better Health of Kentucky



## Tip Tuesday

We here at Aetna Better Health value your partnership and welcome the opportunity to learn from you and hear your feedback as professionals who have long-standing expertise in service to communities.

**The bottom line is - - - We are here to support you. We hope to provide value and guidance in the navigation of the Medicaid system. Additionally, we want to -- alongside you-- provide services to our men, women, children, and families to achieve common positive health and wellness goals.**

**Network providers are essential partners to advancing health equity**

# Earn a new Care Champion badge for your provider profile

At Aetna®, we're committed to health equity and believe everyone should have a fair and just opportunity to be as healthy as possible.

## New courses available

We're launching a new [clinical educational hub](#) for health care professionals. The hub, which includes courses, addresses health equity and related topics. The courses are meant to help care teams reduce the barriers that underserved and marginalized patients experience. The hub can help empower you with the skills, knowledge, and tools you need for everyday interactions with patients.

## Start training today

You can access the on-demand, free, accredited courses to earn digital Care Champion badges for your provider profile in three clinical areas of focus.

- **Culturally Responsive Care**
- **LGBTQ+ Responsive Care**
- **Culturally Responsive PCP Behavioral Health Care**

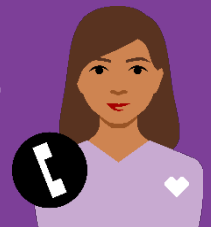
To earn a badge, you'll need to:

1. Complete the Foundational Activity course
2. Complete a role-specific course
3. Complete the therapeutic area-specific courses

Your digital Care Champion badge will be added to your profile and be visible to Aetna members in our provider directories.

**Questions? We've got your back.**

**Just call our Network Relations Department at 1-855-454-0061 or contact your Network Manager directly at any time**



<<INSERT PR CONTACT LISTING>>